

Large capacity industrial engines with high torque and a long service life

Hydrodynamic drive unit for fast acceleration and direction changes

Comfortable operator's cab featuring exemplary ergonomics

Isolated, cushion mounted cab

Catalytic converter standard on all TFG trucks



DFG/TFG 16–20 AK

Diesel and gas forklifts with hydrodynamic drive units (1600, 2000 kg)

Jungheinrich hydrodynamic diesel and gas forklift trucks have an incredible handling capacity in a variety of applications. The hydrodynamic drive performs especially well in medium to long distance operations and also ensures smooth shock-free drive from rest.

Large capacity industrial engines generate high torque even at low speeds. The benefits of this include lower fuel consumption and noise. These robust engines are specially designed for use in forklift trucks. That ensures high reliability and a

long service life even for tough applications.

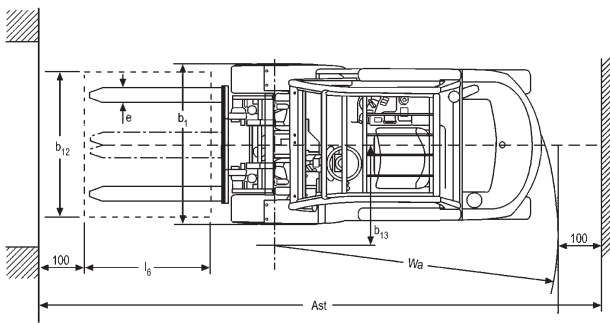
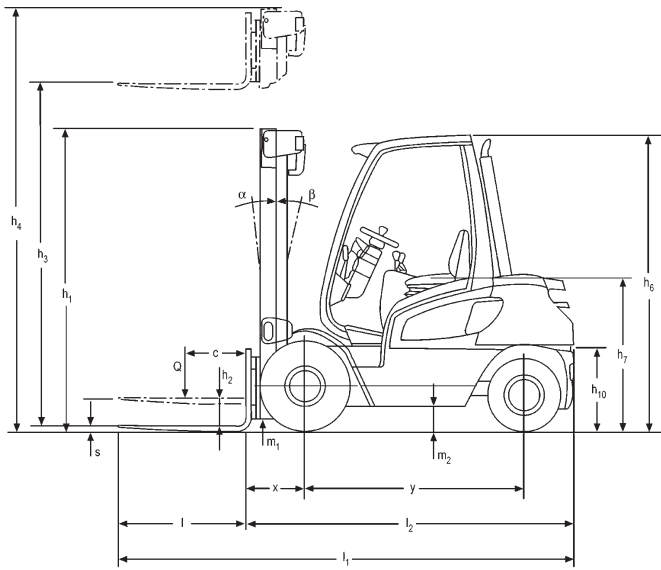
All the engines feature low emissions and comply with the future EU Directives. The gas versions are fitted as standard with a catalytic converter. A closed-loop 3-way catalytic converter (TFG) and various particulate filter systems (DFG) are available as options.

The operator's cab has an ergonomic layout and is designed around the operator. This ensures safety, protects health and

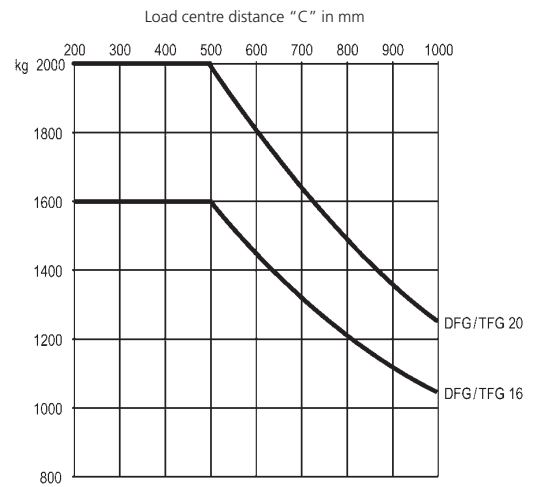
enables the operator to concentrate fully on his work whilst being in a relaxed & stress free environment. Overall this ensures maximum productivity for arduous shifts.

**JUNGHEINRICH**

DFG/TFG 16–20 AK



Capacity



Designation	Mast Table DFG/TFG 16–20 AK					Capacity table (kg) c = 500 mm	
	Lift	Free lift	Closed mast height	Max. height	Tilt forward/backward	without sideshift, single solid tyres	
	h ₃ mm	h ₂ mm	h ₁ mm	h ₄ mm	α/β (°)	DFG/TFG 16 AK	DFG/TFG 20 AK
Two-stage ZT	2900	150	1985	3450	7/7	1600	2000
	3100	150	2085	3650	7/7	1600	2000
	3300	150	2185	3850	7/6	1600	2000
	3600	150	2335	4150	7/6	1600	2000
	3800	150	2435	4350	7/6	1600	2000
	4000	150	2535	4550	7/6	1600	2000
	4500	150	2835	5050	7/6	1600	2000
	5000	150	3085	5550	7/6	1500	2000
	5500	150	3435	6050	7/6	1350	1600
5800	150	3735	6550	7/6	1100	1350	
Two-stage ZZ	2900	1390	1940	3450	7/7	1600	2000
	3100	1490	2040	3650	7/6	1600	2000
	3300	1590	2140	3850	7/6	1600	2000
	3600	1740	2290	4150	7/6	1600	2000
	3800	1840	2390	4420	7/6	1600	2000
	4000	1940	2490	4550	7/6	1600	2000
	4500	2240	2790	5050	7/6	1500	2000
Three-stage DZ	4200	1390	1940	4750	7/5	1600	2000
	4350	1440	1990	4900	7/5	1600	2000
	4500	1490	2040	5050	7/5	1600	2000
	4800	1590	2140	5350	7/5	1600	2000
	5000	1665	2215	5550	7/5	1600	2000
	5500	1840	2390	6050	7/5	1450	1620
	6000	2040	2590	6550	7/5	1100	1220
	6500	2290	2840	7050	7/5	900	1000

Technical Data in line with VDI 2198 as at: 09/2003

Identification	1.1	Manufacturer (abbreviation)	Jungheinrich	Jungheinrich	Jungheinrich	Jungheinrich	1.1
	1.2	Manufacturer's type designation	DFG 16 AK	TFG 16 AK	DFG 20 AK	TFG 20 AK	1.2
	1.3	Drive: electric (battery or mains), diesel, petrol, fuel gas, manual	diesel	fuel gas	diesel	fuel gas	1.3
	1.4	Type of operation: hand, pedestrian, standing, seated, order-picker	seated	seated	seated	seated	1.4
	1.5	Load capacity/rated load Q (t)	1.6	1.6	2	2	1.5
	1.6	Load centre distance c (mm)	500	500	500	500	1.6
	1.8	Load distance, centre of drive axle to fork x (mm)	395	395	395	395	1.8
	1.9	Wheelbase y (mm)	1400	1400	1400	1400	1.9
	Weights	2.1	Service weight kg	3020	3000	3270	3250
2.2		Axle loading, laden front/rear kg	4000/620	4030/570	4600/670	4630/620	2.2
2.3		Axle loading, unladen front/rear kg	1320/1700	1270/1730	1240/2030	1190/2060	2.3
Wheels, Chassis	3.1	Tyres: solid rubber, superelastic, pneumatic, polyurethane	SE(L)/SE(L)	SE(L)/SE(L)	SE(L)/SE(L)	SE(L)/SE(L)	3.1
	3.2	Tyre size, front (∅ x width)	6.50-10 (14PR)	6.50-10 (14PR)	6.50-10 (14PR)	6.50-10 (14PR)	3.2
	3.3	Tyre size, rear (∅ x width)	18x7-8 (16PR)	18x7-8 (16PR)	18x7-8 (16PR)	18x7-8 (16PR)	3.3
	3.5	Wheels, number front rear (x = driven wheels)	2x/2	2x/2	2x/2	2x/2	3.5
	3.6	Track width, front b ₁₀ (mm)	895	895	895	895	3.6
	3.7	Track width, rear b ₁₁ (mm)	870	870	870	870	3.7
	Basic Dimensions	4.1	Mast/fork carriage tilt forward/backward α/β	7°/6°	7°/6°	7°/6°	7°/6°
4.2		Lowered mast height h ₁ (mm)	2185	2185	2185	2185	4.2
4.3		Free lift h ₂ (mm)	150	150	150	150	4.3
4.4		Lift height h ₃ (mm)	3300	3300	3300	3300	4.4
4.5		Extended mast height h ₄ (mm)	3850	3850	3850	3850	4.5
4.7		Overhead load guard (cab) height h ₆ (mm)	2130	2130	2130	2130	4.7
4.8		Seat height/standing height h ₇ (mm)	1005	1005	1005	1005	4.8
4.12		Coupling height h ₁₀ (mm)	375/545	375/545	375/545	375/545	4.12
4.19		Overall length l ₁ (mm)	3245	3245	3300	3300	4.19
4.20		Length to face of forks l ₂ (mm)	2245	2245	2300	2300	4.20
4.21		Overall width b ₁ /b ₂ (mm)	1070	1070	1070	1070	4.21
4.22		Fork dimensions s/e/l (mm)	40x100x1000	40x100x1000	40x100x1000	40x100x1000	4.22
4.23		Fork carriage ISO 2328, class/type A, B	2A	2A	2A	2A	4.23
4.24		Fork-carriage width b ₃ (mm)	1000	1000	1000	1000	4.24
4.31		Ground clearance, laden, under mast m ₁ (mm)	115	115	115	115	4.31
4.32		Ground clearance, centre of wheelbase m ₂ (mm)	135	135	135	135	4.32
4.33		Aisle width for pallets 1000 x 1200 crossways Ast (mm)	3570	3570	3615	3615	4.33
4.34		Aisle width for pallets 800 x 1200 lengthways Ast (mm)	3770	3770	3815	3815	4.34
4.35		Turning radius Wa (mm)	1975	1975	2020	2020	4.35
4.36	Smallest pivot point distance b ₁₃ (mm)	560	560	560	560	4.36	
Performance Data	5.1	Travel speed, laden/unladen km/h	18.7/19.0	18.5/19.5	18.4/18.7	18.0/19.0	5.1
	5.2	Lift speed, laden/unladen m/s	0.61/0.65	0.56/0.65	0.60/0.65	0.55/0.65	5.2
	5.3	Lowering speed, laden/unladen m/s	0.56/0.48	0.56/0.48	0.57/0.48	0.57/0.48	5.3
	5.5	Drawbar pull, laden/unladen S ₂ 60 min N	12370/9000	10100/8600	12560/8200	9800/7800	5.5
	5.6	Max. drawbar pull, laden/unladen S ₂ 5 min N					5.6
	5.7	Gradient performance, laden/unladen S ₂ 30 min %	26/23	24/22	23/21	22/20	5.7
	5.8	Max. gradient performance, laden/unladen S ₂ 5 min %					5.8
	5.9	Acceleration time, laden/unladen 10 m s	5.0/4.5	5.0/4.8	5.1/4.4	5.6/5.4	5.9
	5.10	Service brake	mech./hydr.	mech./hydr.	mech./hydr.	mech./hydr.	5.10
	Engine	7.1	Engine manufacturer/type	Perkins 404C.22	Mazda FE	Perkins 404C.22	Mazda FE
7.2		Engine power acc. to ISO 1585 kW	34.1	26	34.1	26	7.2
7.3		Rated speed 1/min	2400	2400	2400	2400	7.3
7.4		No. of cylinders/cubic capacity /cm ³	4/2216	4/1998	4/2216	4/1998	7.4
7.5		Fuel consumption acc. to VDI cycle l/h, kg/h	2.3	1.8	2.5	2	7.5
Other Details	8.1	Type of drive control	hydrodynamic	hydrodynamic	hydrodynamic	hydrodynamic	8.1
	8.2	Operating pressure for attachments bar	160	160	160	160	8.2
	8.3	Oil volume for attachments l/min	45	45	45	45	8.3
	8.4	Sound level at driver's ear db(A)	76	75	76	75	8.4
	8.5	Tow coupling, type DIN	15170/type H	15170/type H	15170/type H	15170/type H	8.5

This specification sheet according to VDI regulations 2198 only provides technical values for the standard truck. Non-standard tyres, different masts, additional equipment, etc. could produce other values. Right reserved for technical changes and improvements.