

Jungheinrich Walkie Straddle Stacker Capacity 2,500/3,500 lb

EJB 14/16



- **Adjustable base legs**
- **Modern ergonomic design**
- **Clearview mast**
- **Regenerative braking**
- **Impulse speed control**
- **Crawl speed with handle in upright position**
- **Pro-Trac-System for improved traction**

The new Jungheinrich EJB is a walkie straddle stacker with capacities of 2,500 or 3,500 lbs. This truck features regenerative braking to provide higher availability. In addition to this the operator is able to lift and lower the forks with an infinitely variable speed without moving his hands from the handle. Infinite control of travel speeds are made possible by the new Speed Control System (SCS).

Safety: The EJB stacker has been engineered under modern safety aspects which are offering very good serviceability and a maximum performance of safety for the operator:

- multifunctional handle which makes it unnecessary to remove hands from handle while operating truck
- emergency stop button within easy reach
- “deadman” braking system, which is activated upon release of the handle
- reversing “belly button” safety switch on the handle, thus reducing the chances of injury
- enclosed type of bumper which protects the operator’s feet

Controls: All control buttons are located in the upper part of the long multifunctional handle and include:

- two butterfly controls for infinite control of travel speeds
- push buttons for lifting and lowering of forks with sensing control
- crawl speed button that will allow truck to move even with handle in an upright position.

Drive Motor: Powerful 1.5 kw separately excited motor with high overload capacity and remarkable efficiency.

Mast: The mast fabrication is of cold drawn steel giving great rigidity. Good visibility of load and forks is permitted because of laterally mounted lifting cylinders (full visibility telescopic mast).

Drive wheel: 9” diameter, 2.75” wide, Polyurethane.

Load wheels: 3.35” diameter, 4.33” wide, Polyurethane.

Steering: Pedestrian operated steering handle can easily be swiveled through 90 degrees to either side. Eccentric mounted handle ensures good sight in moving direction even if load is picked up.

Brake: Electromagnetic disc brake connected to drive shaft. When butterfly control is in zero-position, the battery will be recharged while truck slows down. Automatic roll-back protection on gradients.

Construction: Rugged built steel frame provides high remaining lift capacities and stability. Truck comes standard with adjustable straddle legs.

Lifting and Lowering: Infinitely variable speeds through push buttons in handle. High pressure pump driven by powerful 3.0 kw series-wound motor.

Maintenance: All electric and hydraulic components are easily accessible. Control fuses are immediately accessible under a one-piece-hood. All Jungheinrich spare parts are available within a remarkably short delivery time.

Batteries: 24 V industrial batteries with 195 Ah, 255 Ah, or up to 340 Ah. Consult factory for specifications.



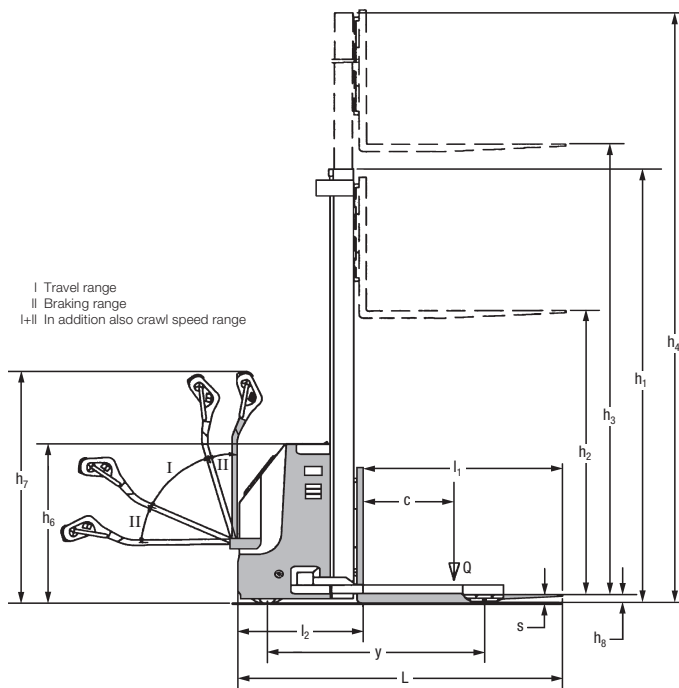
ISO-9001, ISO-14001-
Certification of the Quality and
Environment Management

JUNGHEINRICH

Performance Data

Capacity	EJB 14	2500 lb	1133 kg
	EJB 16	3500 lb	1586 kg
Travel speed	without load	3.75 mph	6 km/h
	with load	3.75 mph	6 km/h
Gradient performance	without load	16 %	16 %
	with load	7 %	7 %
Lift speed	without load	45 ft/min	0,23 m/s
	with load	28 ft/min	0,14 m/s
Truck weight	with battery*	2660 lb	1205 kg

* With 255 Ah battery and a 126"-mast



Technical characteristics

Q	— Capacity EJB 14	2500 lb	1133 kg
	EJB 16	3500 lb	1586 kg
c	— Load center	24"	600 mm
y	— Wheelbase	55.5"	1410 mm
B	— Overall width adjustable	from 44" to 61.8"	1120 mm 1570 mm
L	— Overall length	80.75"	2051 mm
l ₁	— Standard fork length	42"	1066 mm
l ₂	— Extension length	35.75"	908 mm
m	— Width across forks	from 8.5" to 33"	from 216 mm to 838 mm
n	— Fork width	4"	100 mm
s	— Thickness of forks	1.6"	42 mm
Wa	— Turning radius	63"	1600 mm
a	— Safety clearance	8"	203 mm
k	— Straddle leg width	4.25"	108 mm
z	— Extension width	31.5"	800 mm
h ₆	— Extension height	35"	889 mm
h ₇	— Upright handle height	51.5"	1308 mm
h ₈	— Lowered fork height	2.5"	63 mm
h ₁	— Overall height	} see tables	
h ₂	— Free lift		
h ₃	— Lift height		
h ₄	— Extended mast height		

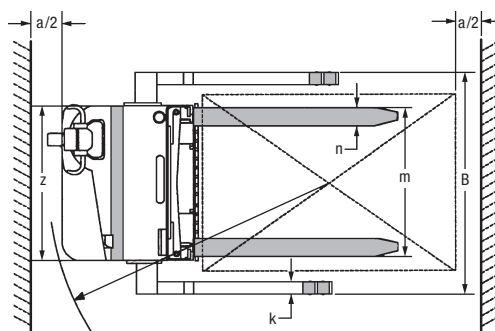
Subject to technical modifications without notice.

Standard Mast (inch/mm)

Telescopic Masts

h ₁	h ₂	h ₃	h ₄
75/1900	4/100	110/2800	132/3360
89/2250	4/100	137/3500	160/4060
99/2500	4/100	157/4000	180/4560
99/2250	67/1720	137/3500	160/4060
75/1905*	54/1370	165/4200	187/4760
89/2250*	67/1720	206/5250	229/5810

*3stage-mast



Aisle turning dimensions Ast (inch)

Pallet size	Position	Ast incl. 8" safety clearance
40" x 48"	lengthways	102"

Subject to technical modifications without notice.