

Jungheinrich Electric Pallet Truck with Sideways Seat Capacity 5000 lb

EKE 20/24 V



- **Multi function lever for fast operation without change of grip**
- **Ergonomic workplace**
- **Compact design suitable for many applications**
- **Electronic Controller with Speed Control**

Jungheinrich electric pallet trucks with sideways seat, type EKE, are ideal for horizontal transport over long distances, manoeuvring in confined spaces. Compact design with a width of only 32.7" as well as the ergonomic and functional workplace design create optimum conditions for high throughput rates.

Operator Workplace: Comfort seat with driver's weight adjustment. Adjustable floor plate. Ergonomic arm rest. Storage facilities (pen tray, parts tray, paper compartment). Upholstered knee area. Safety switch in foot space.

Multi Function Lever: Fast operation without change of grip. Controls direction of travel, travel speed, lifting/lowering, horn and reverse current brake.

Steering: Particularly easily moving 1-spoke steering wheel with 11.8" dia. and steering knob. Power steering available on request.

Drive Unit: Powerful, high capacity special separately excited motor with 2.0 kW (1 hour rating) capacity and very high efficiency. Two years warranty on the motor.

Battery: 24 V. The battery is fitted on rollers for easy battery changing. Digital discharge monitor fitted as standard.

Drive Control: State of the art impulse control electronics with Speed Control permit speed regulating. Easy regulating of the speed via the multi function lever. Even when negotiating a downhill gradient the preset travel speed is maintained. The setting of the drive parameters acceleration, final speed limitation, motor brake and change of travel direction is possible via the impulse control.

Wheels: All wheels fitted with Vulkollan tyres as standard. Drive wheel 9.1" dia., 3.0" wide, support wheel 7.1" dia., 2.6" wide. Load wheels 3.3" dia., 3.3" wide, in tandem design. Twin tandem wheels on request.

Brake: Sensitive and protective braking via reverse current through simple operation of the multi function lever. Motor braking with energy reclamation through Speed Control in zero position of the multi function lever. Automatic rolling-back protection on uphill gradients. Speed Control detects a rolling back on gradients and automatically

activates the brake. Additional load-proportional stepless disc brake, electro-magnetic, low wear and free from asbestos. Operated via foot pedal.

Hydraulic: High pressure pump with powerful series wound motor (2.0 kW). Operation of the functions lifting/lowering is effected by means of push buttons in the multi function lever.

Load Section: Pull rod kinematics with particularly strong forks (1.2 x 2.0"). Slide skids on either side protect the pull rods from wear.

Optional Extras: Entry rollers in the fork tips, single load roller, vertical load guard, cold store version, seat heater, electrical power steering.

Accessories: Battery changing station. Electronic battery charging systems by Jungheinrich on request.

Maintenance: Easy access to all components via fold out covers and doors.

Safety: The truck conforms to the current EU Directives **CE** and ANSI B56.1 for fork lift trucks.

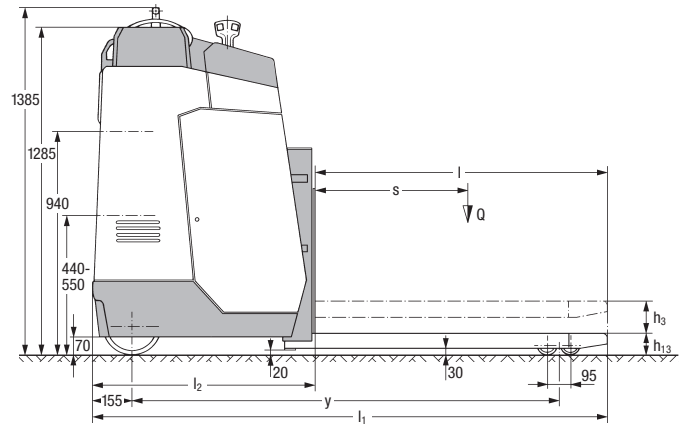


ISO-9001, ISO-14001-
Certification of the Quality and
Environment Management

JUNGHEINRICH

Performance Data

| | | | |
|-------------------------------------|--------------|------------|-----------|
| Capacity | | 5000 lb | 2000 kg |
| Travel Speed | without load | 6.7 mph | 10.7 km/h |
| | with load | 5.2 mph | 8.4 km/h |
| Lifting Speed | without load | 9.8 ft/min | 0.05 m/s |
| | with load | 7.9 ft/min | 0.04 m/s |
| Gradient performance | without load | 13 % | 13 % |
| | with load | 6 % | 6 % |
| Service weight incl. 360 Ah battery | | 2425 lb | 1100 kg |

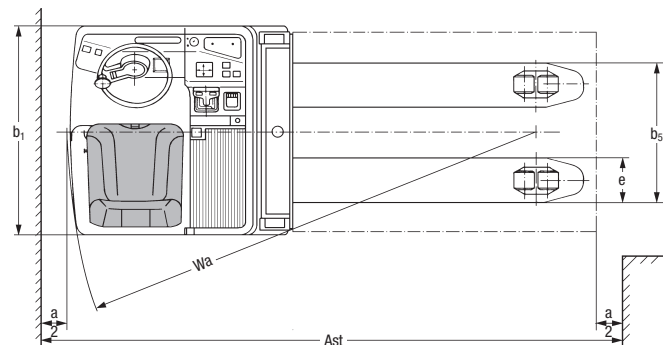


Technical Data

| | | | |
|-----------------|---------------------------------------|---------------|----------------|
| Q | — Capacity | 5000 lb | 2000 kg |
| s | — Load centre distance | 24" | 600 mm |
| y | — Wheelbase, load section raised | 63" | 1600 mm* |
| | — Width across tandem load wheels | 3.7" | 95 mm |
| l ₂ | — Drive unit length | 31.5" | 800 mm |
| l ₁ | — Truck length | 80" | 2030 mm |
| l | — Standard fork length | 45" | 1150 mm |
| b ₁ | — Overall width | 33" | 830 mm |
| | — Height of driver's seat above floor | 37" | 940 mm |
| | — Height of floor plate | 17.3–21.6" | 440–550 mm |
| b ₅ | — Width over forks | 20/21.3/26.4" | 510/540/670 mm |
| e | — Fork width | 6.7" | 170 mm |
| h ₁₃ | — Lowered height | 3.4" | 86 mm |
| h ₃ | — Lift | 4.9" | 125 mm |
| Wa | — Turning radius, load section raised | 70" | 1781 mm* |
| a | — Safety distance | 7.9" | 200 mm |

* Load section lowered + 89 mm

Subject to technical modifications without notice.



Working Aisle Widths (mm)

| Pallet Size | Position | Ast* incl. 200 mm safety clearance | |
|-------------|------------|------------------------------------|----------|
| | | l = 1000 | l = 1150 |
| 800 x 1000 | lengthwise | 2106 | — |
| 800 x 1200 | lengthwise | — | 2306 |

* diagonal according to VDI + 190 mm